

WORK INSTRUCTIONS

EXTERIOR COSMETIC SEALING

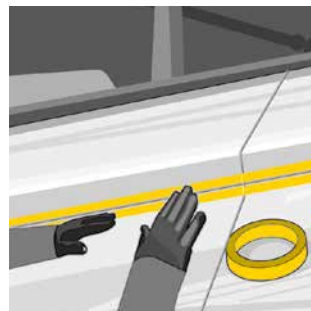
Before starting the work

SAFETY AND TOOLS



- Wear personal protective equipment and prepare the products and tools needed

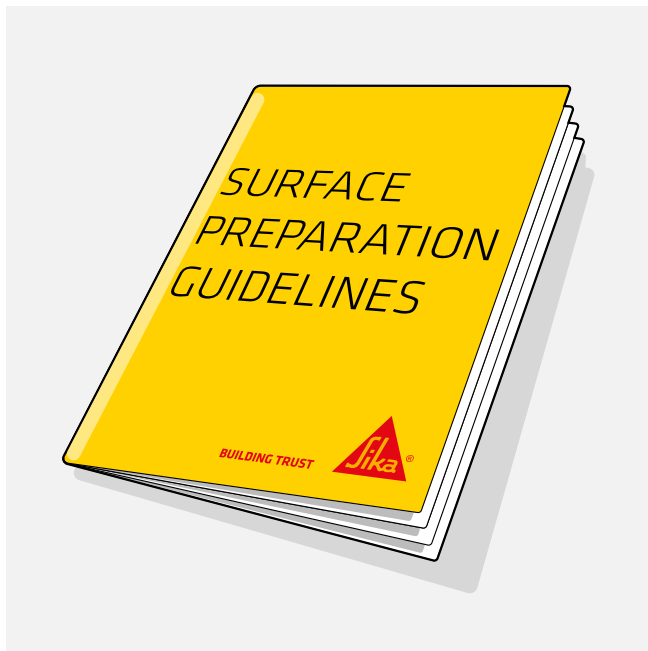
PROTECTION WITH MASKING TAPE



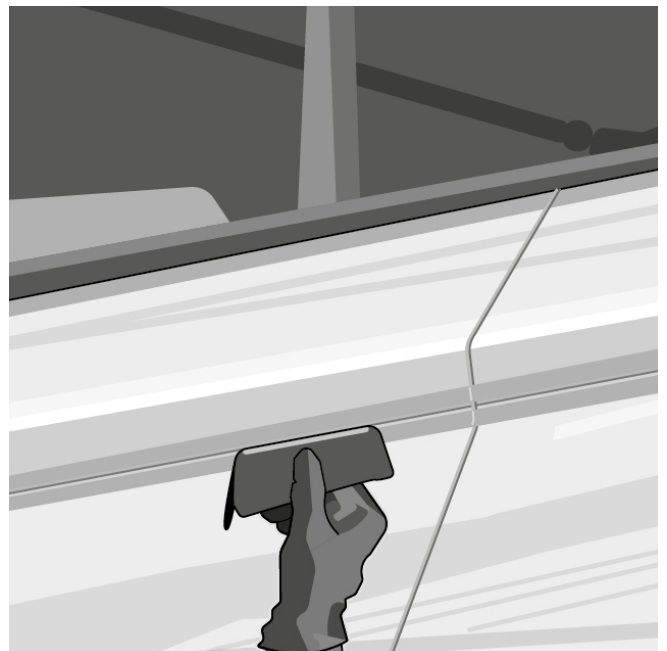
- Around the location of the sealing joint

Starting to work

1. SURFACE PREPARATION

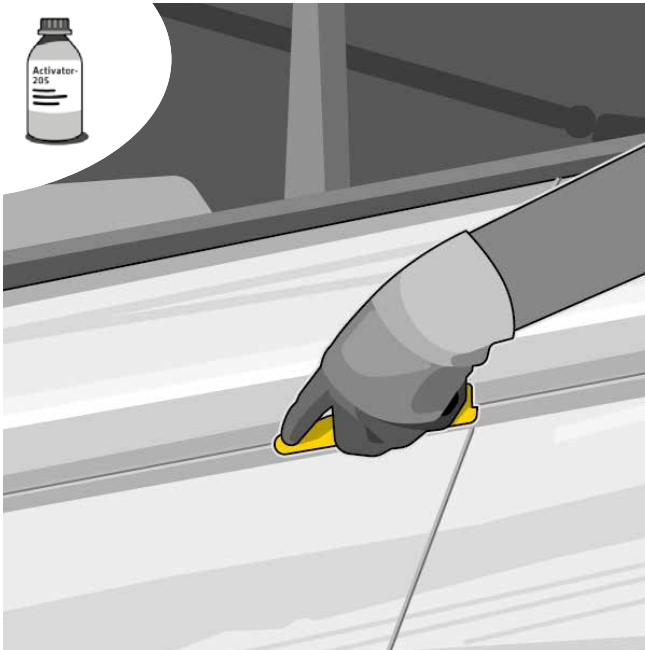


- Check the latest version of Sika's surface preparation guidelines



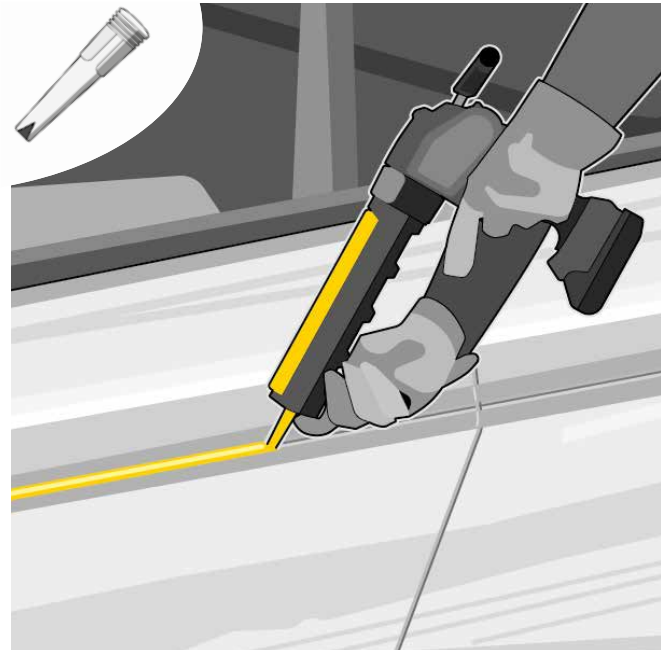
- Abrasive pad very fine (220-240) along the location of the sealing joint
- Then use a dry wipe to remove the dust

2. SURFACE PREPARATION



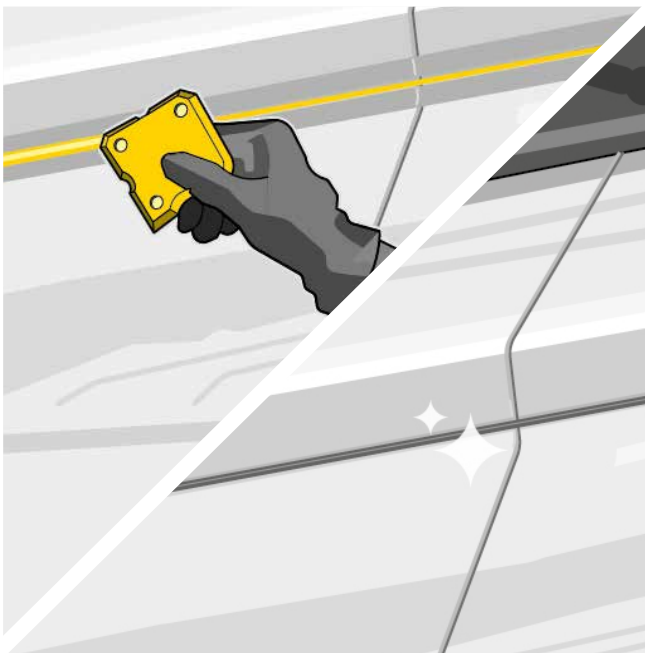
- Apply Sika® Aktivator-205 along the sealing joint location with lint-free paper, FOT min 10' max 120'

3. APPLICATION OF SIKAFLEX®-591



- Cut nozzle to the right size
- Apply Sikaflex®-591 along the location of the sealing joint

4.



- Tool joint to remove excess material and give the joint a good-looking aspect, then remove masking tape

① FOT = flash-off time (23 °C / 50% r.h.)

Tests with actual substrates and conditions have to be performed ensuring adhesion and material compatibility. Please consult the most current local Product Data Sheets prior to any use. Our most current General Sales Conditions shall apply.